

## Simio Tools Installer – Getting Started

To use the Clone and Compare Tool, it is necessary to install the required files first. To ease up this installation process, use the delivered SimioToolsInstaller.msi. To run the PlugIn, you need either the Academic Version, Design Edition, Team Edition or Enterprise Edition.

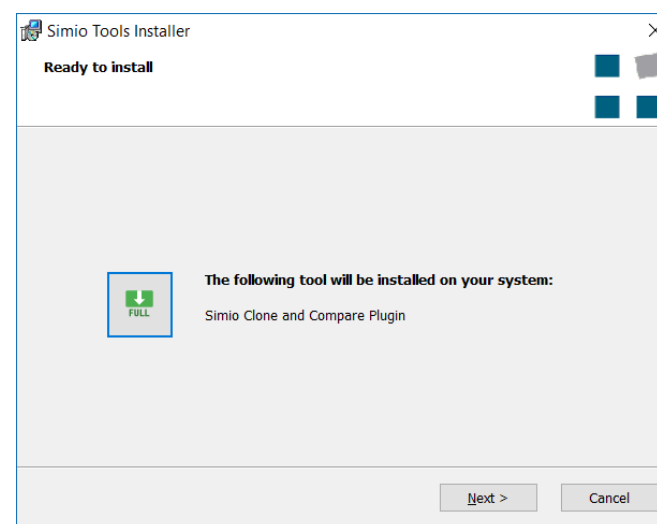
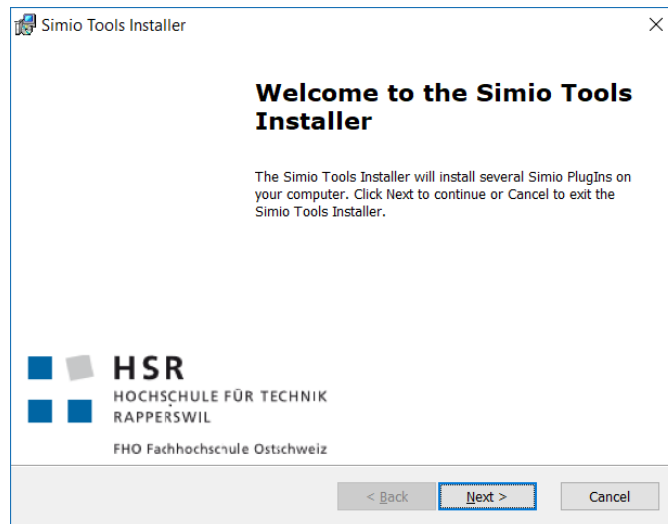
### What will be installed?

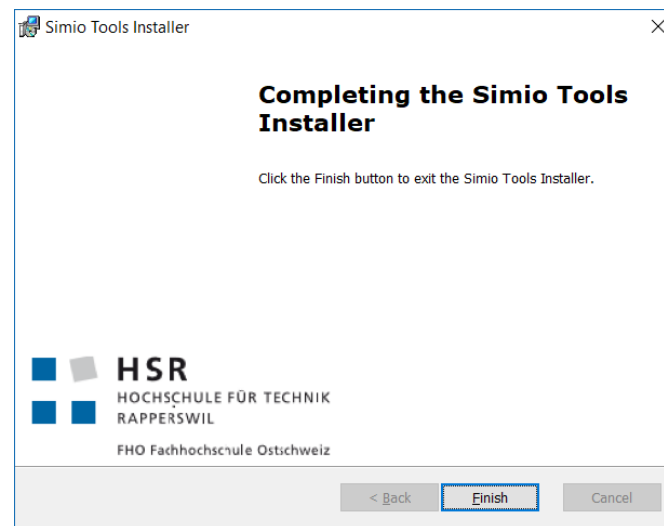
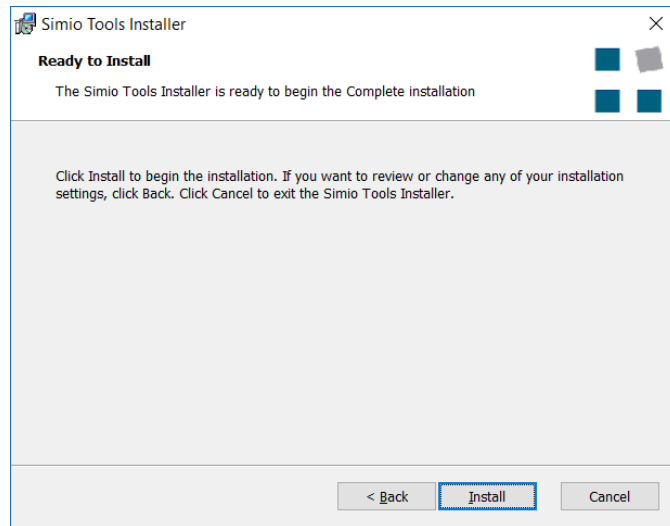
The installation process will move the following files to your Simio-installationfolder (usually C:\Program Files (x86)\Simio\UserExtensions)

- Comparer.dll
- ComparerUI.dll
- SimioAdapter.dll
- Mathnet.Numerics.dll

### Installation

1. Download the SimioToolsInstaller.msi
2. Double-click on the downloaded file to execute it
3. Follow the instructions of the wizard



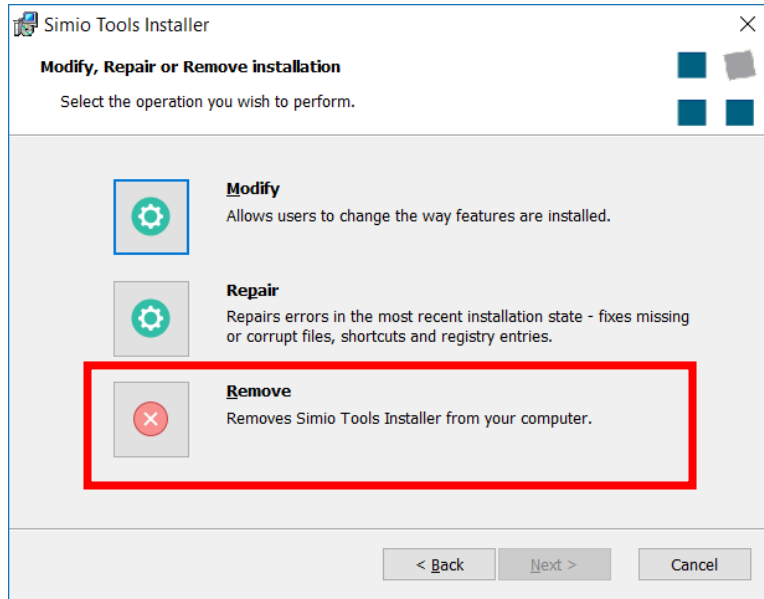


If the installer encounters a problem while installing the required files, there is the following alternative:

1. Download the attached zip-file "ModelComparison.zip"
2. Extract it to the following folder: C:\Program Files (x86)\Simio\UserExtensions
3. If you changed the location of your Simio-folder, locate it and extract the zip file to the folder "UserExtensions"

## Deinstallation

To uninstall the components from your computer, you simply can execute the SimioTools once again.

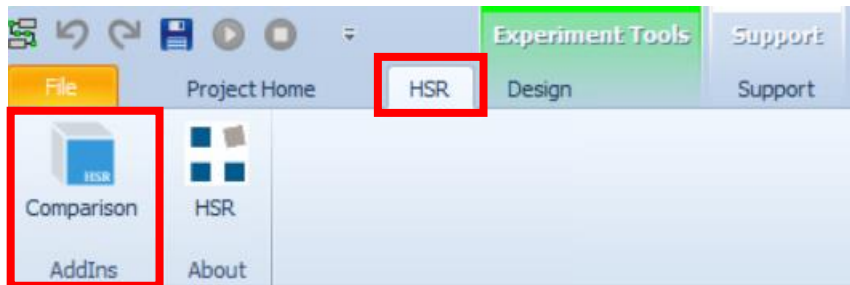


As an alternative, you can also go to your control panel and select the “SimioToolsInstaller” in your software list and click uninstall.

## PlugIn – Functions Overview

To start the newly installed Plugin, start Simio. You will notice that there is a new Tab added to your Simio, which is called “HSR”.

The first Button will start the Clone and Compare PlugIn, the second will lead you to the Simulation@HSR Website.

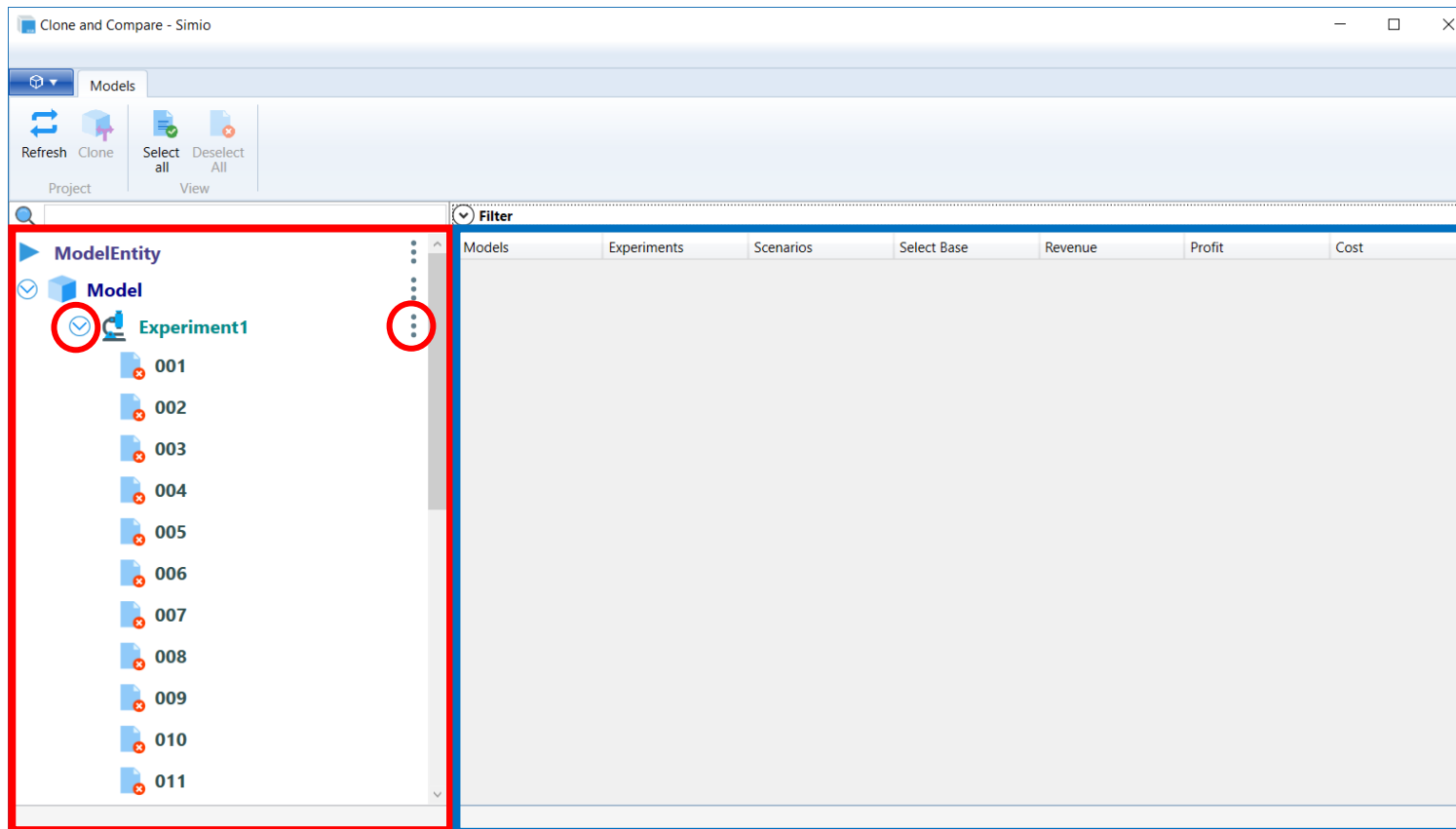


To work with the tool successfully, you require an existing Simio-Project, which contains at least one model. Once you opened your project, click on the “Comparison”-Button located at the HSR-Tab. The following Window will open. The tool will automatically read the current project structure in.

## Modelmanagement

The red section is used to manage your models. At this point you would be able to clone your models and experiments. To do so, you only have to click on the three points next to each model/experiment. With the arrow symbol (to the left of each model/experiment) you can expand or hide the elements beneath a model/experiment.

Once a model or an experiment is selected, you can clone it multiple times. If a model or experiment is missing, use the “Refresh”-Button to refresh the view.



## Modelcomparison

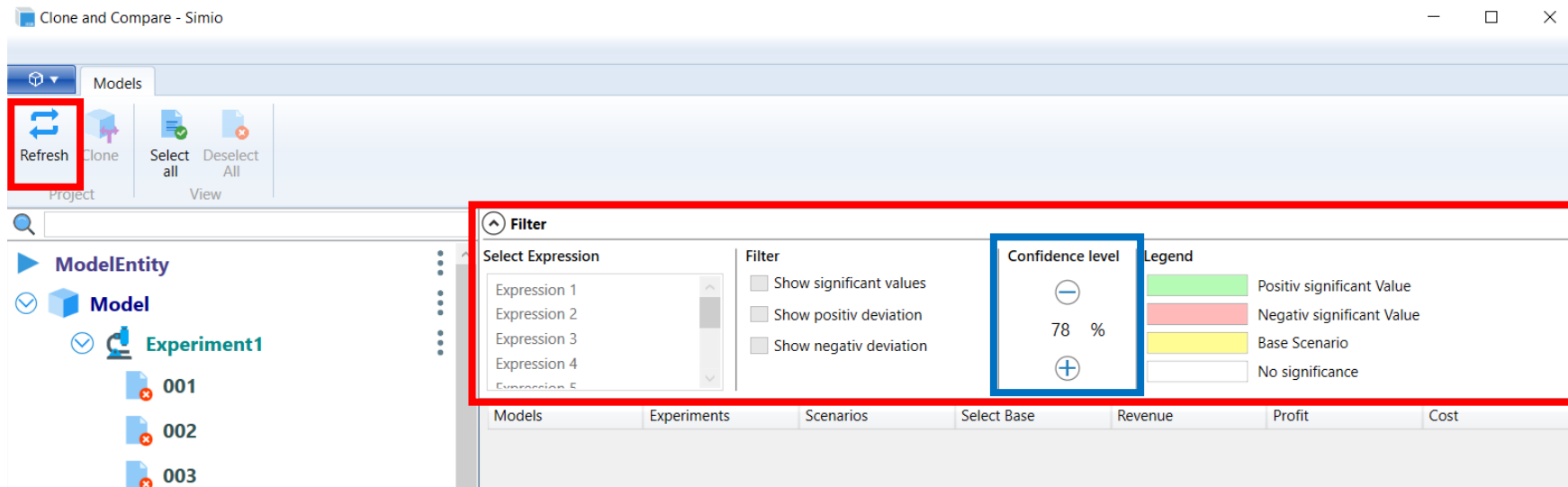
Once you selected two or more scenarios in the left section (red), they will be shown in the compare area (blue bordered section). The next step is to set a base-model. Each comparison requires a selected base because the other scenarios will be compared in contrast to the base. The base is simply set by checking the checkbox. The current base-model/scenario will be highlighted yellow.

Models	Experiments	Scenarios	Select Base	Revenue	Profit	Cost
Model	Experiment1	004	<input type="checkbox"/>	27834.4	23564.4	4270
Model	Experiment1	003	<input type="checkbox"/>	37312	32642	4670
Model	Experiment1	005	<input type="checkbox"/>	34962.4	30452.4	4510
Model	Experiment1	007	<input checked="" type="checkbox"/>	19632.8	15252.8	4380
Model	Experiment1	008	<input type="checkbox"/>	37048	32558	4490

Responses

Left to the “Select Base” column, the active responses will be shown. Green highlighted values show, that this result is significant in contrast to the base, in a positive way. By clicking on the column header, the values will be sorted either ascending or descending.

## Filtering/Confidence level



As you click on the arrow symbol next to the “Filter”-label, a new section will expand. You will notice, that some of the functions are still disabled because they are still in development. Within this build, it is only possible to set the confidence level. Once altered, you have to reselect the base-model to push a new calculation with the newly set confidence level.