


Simio Portal

For Execution and Reports Distribution


7/18/2017 Copyright 2016 Simio LLC 1




Simio Key Capabilities

5 ▶ Facilitates **Cloud based** results distribution

- Gantt charts
- Reports
- Dashboards
- Experimentation



7/18/2017 Copyright 2016 Simio LLC 2




Simio Portal Edition

▶ Simio Portal Edition is provided as a “Software-as-a-Server” (SaaS)


- Microsoft’s Azure Platform
- Highly scalable, reliable, and secure

▶ Increased visibility of results

- Publish and share simulation and scheduling results over the web
- Cloud based results distribution of Gantt charts, dashboards, tables, reports and log files
- Unlimited number of users can view results



7/18/2017 Copyright 2016 Simio LLC 3



Simio Portal Edition


▶ Increased access to experimentation

- Model builders can allow other team members to perform experimentation on their model without requiring Simio desktop software

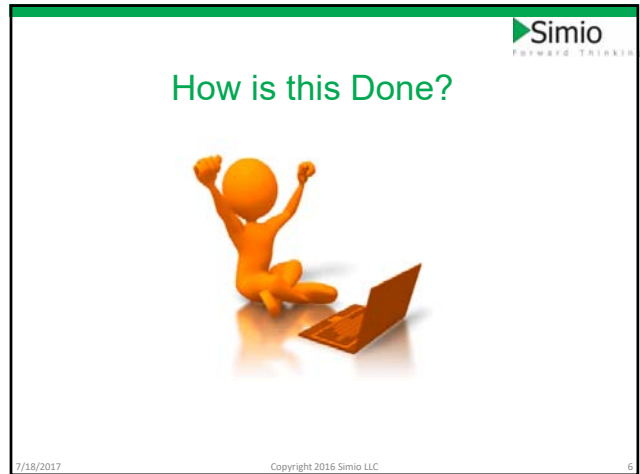
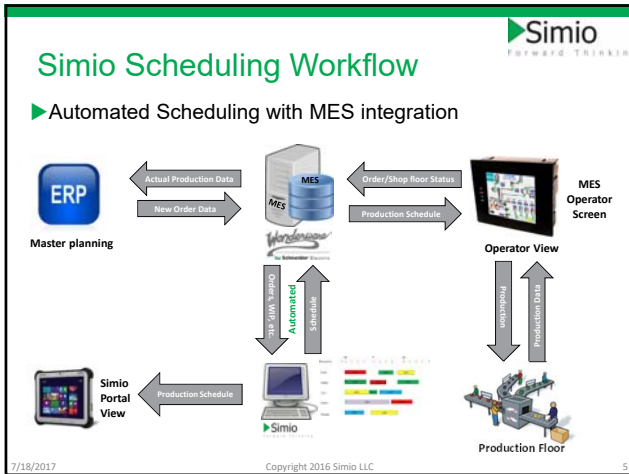
▶ Experimentation and Scheduling combined

- Run an experiment and optionally run a Plan for all or some of the scenarios

▶ Simio portal edition can be accessed using a standard web browser or touch enabled mobile devices such as a Smartphone or tablets



7/18/2017 Copyright 2016 Simio LLC 4



- ### Demo
- ▶ Show portal, UI, admin
 - ▶ Roles, groups, traits
 - ▶ Show how to upload plan results for viewers.
 - ▶ View on tablet
 - ▶ Load model and run experiment and plan for viewing
 - ▶ Compare dashboard
 - ▶ Limitations
 - Add-ins/user code, data access, mfg selection rules
- 7/18/2017 Copyright 2016 Simio LLC 7

